

J3 Programmer Installation Instructions

This guide outlines the process of installing the T.I. Performance J3 Programmer.

The J3 Programmer is a USB device which allows reprogramming T.I. Performance J3 Chips, and reading standard binary files from ECUs (with the [EEC Reader](#), sold separately).

Please read this guide completely and follow all steps. This includes reading the Extra Tips section. If you need to contact us about a problem, make sure you let us know which tips you have followed.

The J3 Programmer allows you to edit the tune on a J3 Chip and remap your ECU using [TunerPro RT](#). **Make sure you use the RT version.** TunerPro RT is fully functional without registering, but it's a good idea to support the author of this excellent software package in order to encourage new features to be added.

After reading this guide, be sure to check the [EEC Tuning Beginners Guide](#) and the other guides available at <http://www.tiperformance.com.au/library/diy-guides/>.

Components

J3 Programmer, Ribbon cable, USB cable
J3 Chip
J3 Edge Interconnect Board (Optional)



Getting Started

To get started, plug the ribbon cable (or interconnect board where optioned) into the J3 Programmer. The interconnect cable is keyed and will only fit one way. If using the board, use the photo on the right to orient the board.

Next, plug your chip into the interconnecting cable or board.

Note: You cannot leave the chip installed in the ECU when using the J3 Programmer.



Installing Drivers - Windows 7, Windows 8 & Windows 10

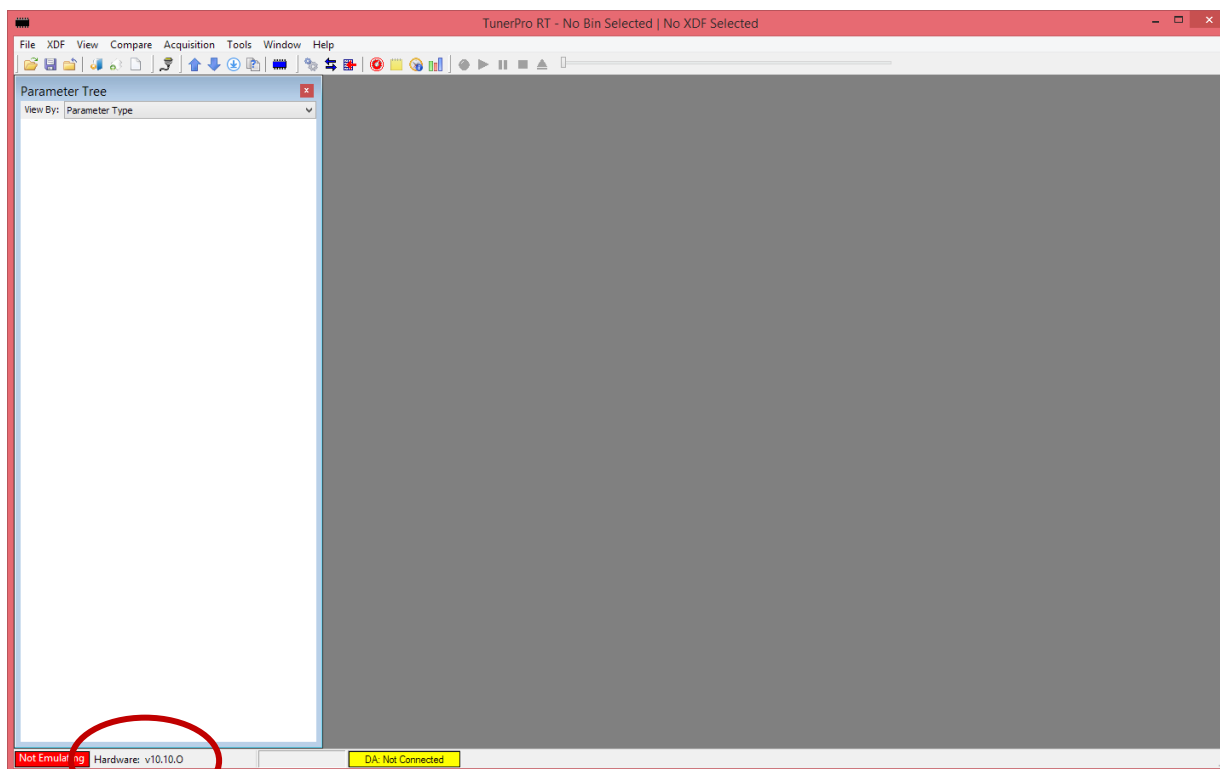
Simply plug your J3 Programmer into the USB port. Windows should detect the device, and in default configuration will install the driver from Windows Update automatically. If the driver installs without error, skip straight to the *Installing TunerPro RT* section.

If the driver does not install, or you see an error in Device Manager, See the Installing Programmer Drivers Manually section of this guide.

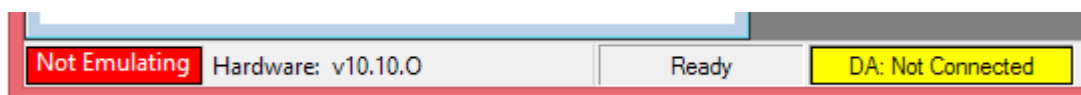
Installing TunerPro RT

Download and install the latest copy of TunerPro RT from <http://tunerpro.net>. We are using 5.00.9995 (as of 2024).

Once TunerPro RT is installed, the device should be auto detected on start-up, as per the below image:



In the status bar, located at the bottom left of the screen, TunerPro RT should display “Hardware: v10.10.0”, as in the following picture:



If you do not see the Programmer registered here, see the Extra Tips section.

Programming a Chip

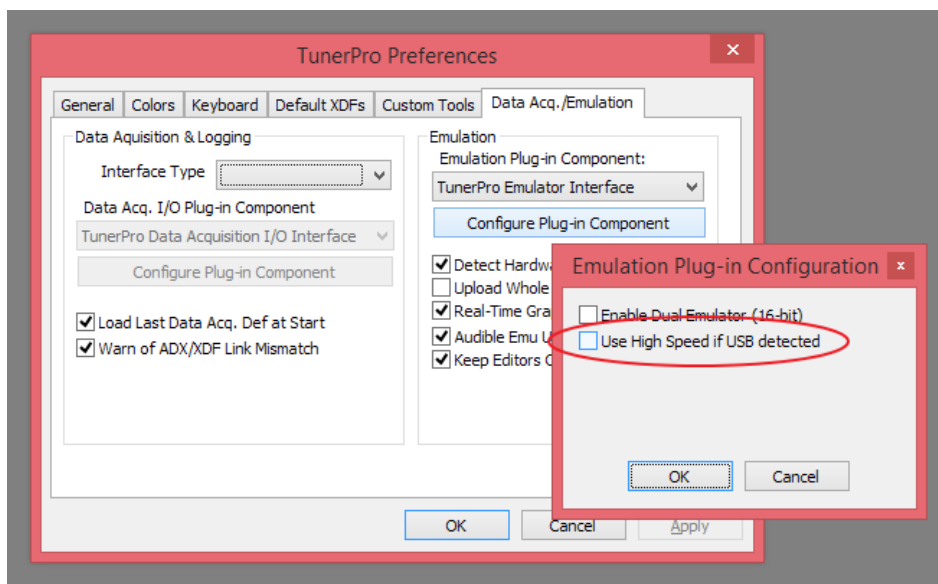
For more information on how to Program your chip, including what files to use etc, see the [EEC Tuning Beginners Guide](#).

Note: **The chip must be removed from the ECU when programming. You cannot leave the chip in the ECU.**

Troubleshooting

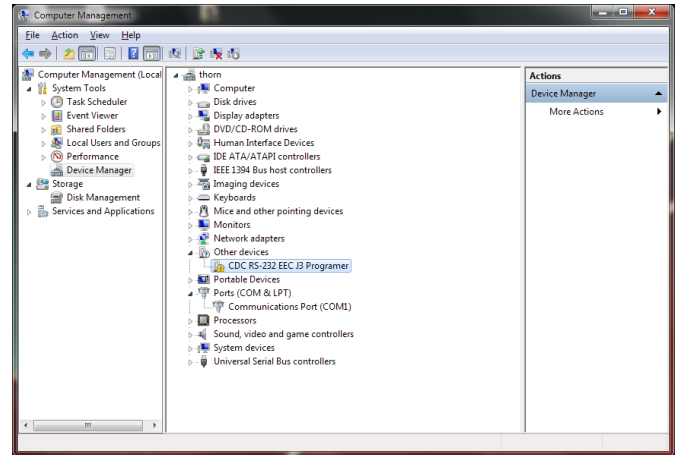
This section covers some basic troubleshooting tips for our J3 Programmer. Please read this guide carefully before contacting us for support.

- **Check the device is operating correctly.** Once plugged in, the green light should be flashing on the programmer. If this is not the case, try another USB cable or port on your computer.
- **Ensure the USB connection is stable.** If the red light stays illuminated at all times and Windows gives a “USB Device Unrecognised” error, the USB connection has been broken while the Programmer was booting, leaving it in a limbo state. Resolve the intermittent USB connection issue (check the cable and USB port on your laptop), and leave the unit unplugged for two hours to let it reset before trying again.
- **Make sure the device is detected by Windows.** Windows should detect the device once plugged in, making the USB connection sound. Check the device is present under COM Ports in Device Manager. If you find an Unknown Device, right click it, and choose Update Driver. Ensure your computer is set to download new drivers from Windows Update.
- **Make sure the device is detected in TunerPro RT.** In the status bar, located at the bottom left of the screen, TunerPro RT should display “Hardware: v10.10.O”. The non-RT version of TunerPro will not work with the device. If you’re sure you’re using RT, check Device Manager and ensure the J3 Programmer device has the lowest COM Port number assigned to avoid any clash.
- **Ensure you are using the USB cable which came with the programmer.** Some USB cables cannot handle the current draw required to power the chip when Programming. This causes the programmer to disconnect from the computer when you attempt to burn the chip, and burning fails. If you have this problem, try another USB cable. We also sell [replacement USB cables](#).
- **Ensure the ribbon cable is seated correctly and the chip is removed from the ECU.** If the programmer is detected but won’t burn or verify a tune, ensure the black ribbon connectors are firmly seated on the cable, and ensure the connectors are correctly plugged into the Programmer and Chip. Ensure the chip is removed from the ECU when programming.
- **Check USB 3.0 settings.** Some older non-compliant USB 3.0 controllers do not work properly with the USB 2.0 chip in the Programmer. Uncheck the High Speed USB setting in TunerPro under Tools, Preferences as follows:



Installing Programmer Drivers Manually from Windows Update

If you see the 'Device driver software was not successfully installed' message or TunerPro RT doesn't detect the Programmer, start Device Manager (click Start, right click Computer, choose Manage). At the Device Manager screen, locate the Programmer as shown on the right.



Right click the device, and choose Update Driver. Ensure you are connected to the internet, then choose 'Search automatically for updated driver software'. The wizard will search online – if successful the wizard will complete.

