

## Installing a J3 Chip

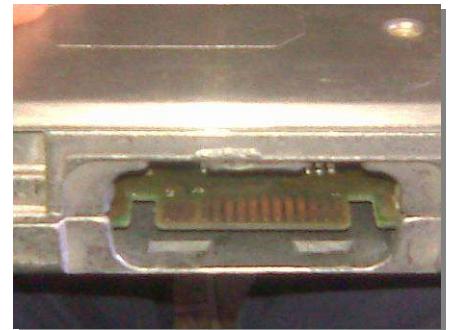
The following guide describes how to install a J3 Chip onto your ECU. Failure to follow these steps correctly **will** lead to issues with the connection, rough running, stalling, etc! Please read this guide carefully before contacting us for help.

1. Remove the passenger side kick panel and unscrew the bracket holding the ECU in. In AU vehicles, this bracket is a lot larger and is riveted in. You will need to drill out the rivet, which can be replaced with a screw.

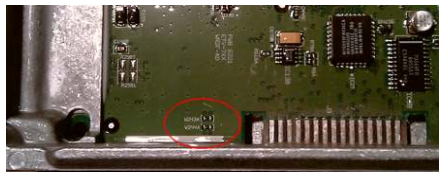


2. Unscrew the electrical connector and remove the ECU from the car. Pry out the black plastic cap which covers the J3 port on the bottom of the ECU with a screwdriver. Note that on EB-ED V8 ECUs this is a tin cover.

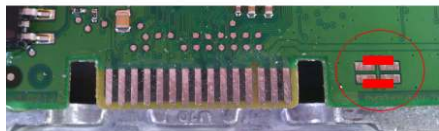
3. To the left is a bare, uncleaned J3 port. Open up the ECU case by removing the screws holding it together. Remove the white paste with a rag and methylated spirits. Next, rub back the protective clear lacquer coating on the J3 terminals using a screwdriver. This will take a little patience but is extremely important.



4. Once you have removed most of this lacquer, use some sandpaper (600 grade works well) to remove the remainder. Once they are clean silver without any clear showing, give them a good clean with a rag and some methylated sprits as per the picture (left). **Note: Failure to follow this step correctly will lead to issues with the connection!**



5. **AU Series 1 only.** If your ECU looks like the top half of the picture on the left (no black resistors between the circled solder pads), you will need to join the two J3 enable links on the back of the ECU. Clean the solder pads with sandpaper and then use two small pieces of wire to join each horizontal pair as in the bottom half of the image.



6. Now you can install the chip. Holding the ECU with the label and screws facing up, insert the J3 Chip as shown in the picture. For older chip models (red PCB), insert the chip with the serial number facing down, as shown on the far right. EB-ED V8 ECUs will require the tin cover to be cut and a capacitor to be bent flat in order to fit the J3 Chip as shown in the middle picture.



6. Use some gaffer tape to hold the chip in place, and insulate the open terminals on the bottom of the unit. You can then install the completed unit back in the car and replace the kick panel. You are done!

### Troubleshooting

If you notice once that once the J3 Chip is installed that car runs rough or the fuel pump runs continuously with the Key On Engine Off, please ensure that you have followed all steps correctly, particularly step 4, **before** contacting us for help.

